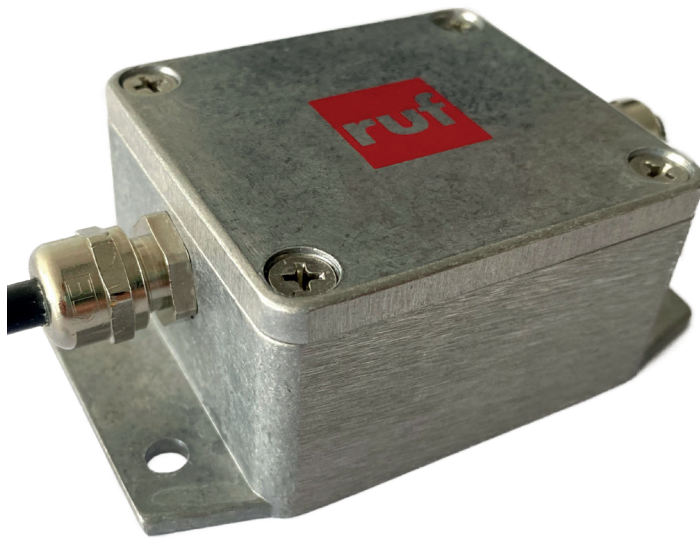


# VisiWeb® Microphone Preamplifier DMPE

Configurable Microphone Preamplifier for Dynamic Microphones



The VisiWeb DMPE microphone amplifier is a compact preamp for dynamic microphones. Due to its robustness and IP67 certification, it is particularly suitable for use in railway applications.

## Powerful

The DMPE is a powerful preamplifier for dynamic microphones. The circuit is based on a dual operational amplifier, allowing the DMPE to provide up to 110 times amplification. The „E“ in its name stands for operation with external power supply, and the wide voltage range of 24 to 110 VDC enables use in numerous applications.

## Compact and robust

The metal housing is designed to be mechanically very robust. It is dust and splash-proof (IP67) and also serves as a heat sink, eliminating the need for additional cooling measures.

## Fault-Tolerant

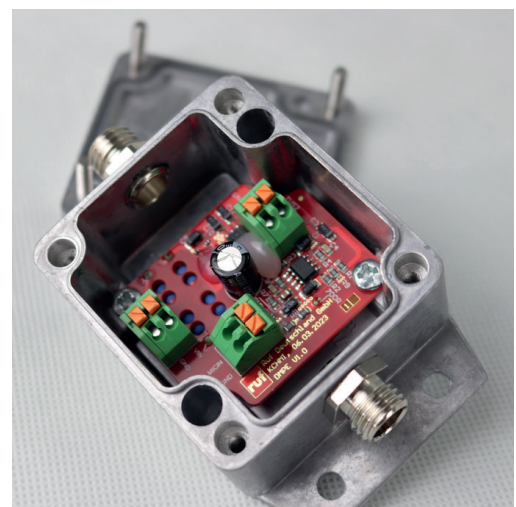
Electrically, the amplifier has been designed to withstand short-term overvoltages, such as those caused by ESD or transients, without any problems. In addition, reverse polarity protection ensures that no damage occurs in the event of a temporary connection error.

## Versatile

Thanks to the configurable input impedance of 700  $\Omega$  or 50 k $\Omega$ , the DMPE can be used with all commercially available dynamic microphones. This makes it versatile, not only in the railway sector but also in many other applications, such as a line-level amplifier.

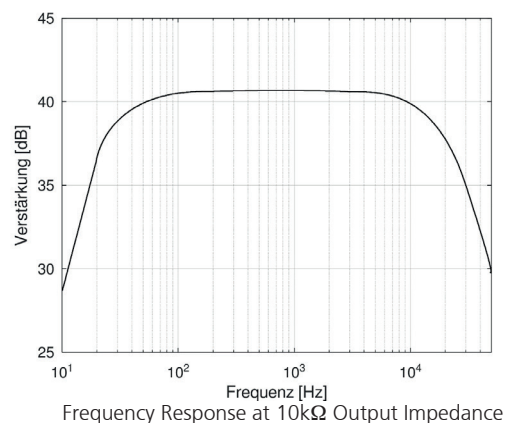
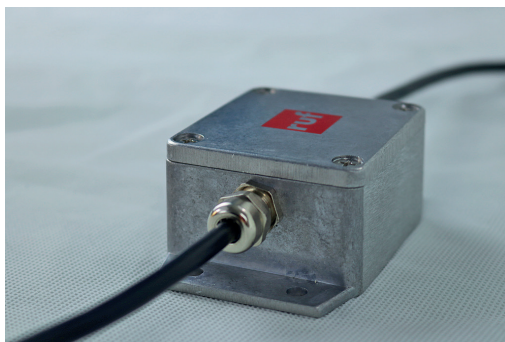
## Advantages

- Wide voltage range
- IP67 certified
- Configurable
- Compact and robust
- Energy efficient



The electronics in the DMPE are housed in a robust metal casing that is dust and water-protected.

## VisiWeb Microphone Preamplifier – Technical Specifications



Mechanical Properties	
Dimensions	[Width x Height x Depth] 95 x 35 x 59 mm
Weight	189 g
Housing material	Aluminum
Ingress Protection	IP67
Electrical Properties	
Nominal voltage	24-110 VDC
Power consumption	4.5 W
Device type	Microphone amplifier for dynamic microphones
Inrush Current	0.37 A
Input Voltage Range	12 -154 VDC
Environmental Properties	
Operating temperature	-25 bis +70 °C (Klasse OT3)
Extended Temperature Range	+85 °C
Cooling During Operation	Passive via bottom of housing
Storage temperature	-45 to +85 °C
Relative Humidity	According to EN 50155, 95% (non-condensing)
Operating Altitude	1400 m above sea level (EN 50121-1, Class A1)
Shock and Vibration	IEC 61373, Category 1, Class B
Protective Coating	Due to the housing (IP67), a protective coating on the circuit board is not necessary.
RoHS Compliance	Yes
REACH Compliance	Yes
Flammability	According to EN 45545-2